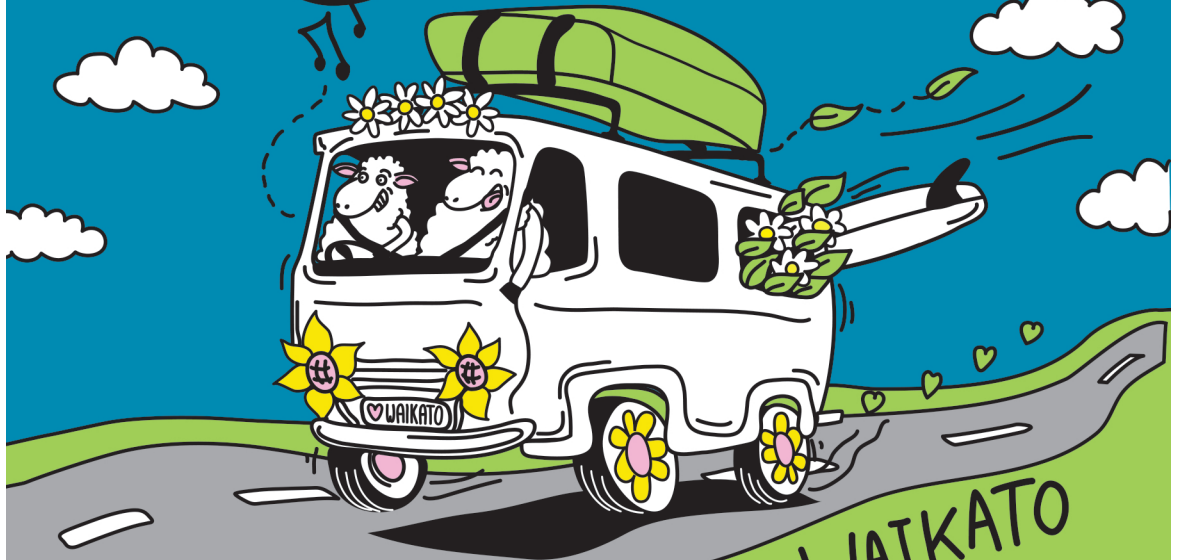


≡ KIA ORA ≡ CAMPERS



PLEASE CARE for THE WAIKATO

Know where
you can and
can't camp



Poo
in the
loo



Do the
right thing
and bin it



Reuse
and recycle!



Respect
the place
you are in



Kaitiakitanga - Protect and preserve our home.
www.waikatodistrict.govt.nz/camping

Waikato
District Council
Te Kaunhera o Te Taiāra o Waikato

RAGLAN Whāingaroa PARKING MAP

-  TIMED PARKING
-  NON-TIMED PARKING
-  PUBLIC TOILETS
-  INFO CENTRE
-  WALK
-  OVERSIZE VEHICLES

NON-TIMED PARKING

- Papahua Reserve (over the walk bridge) - 2 mins walk to town centre
- James Street
- Cross Street (at rugby grounds) - 5 min walk to town centre, 10 min walk to the wharf
- Stewart Street
- Joyce Petchell Park

TIMED PARKING

- Bow Street
- Wallis Street (Bow St. end)
- Bankart Street
- Wainui Road to Bankart St.
- Raglan Wharf
- The Fire Station

WALK TIMES

- Rugby Grounds to Bow Street - 5 min
- Rugby Grounds to Wharf - 10 min
- Papahua Reserve to CBD - 2 mins



FREEDOM CAMPING PROHIBITED AREA



Recreation Centre - No Overnight Stays



'Welcome to Raglan - Enjoy our Place'